

HISTORIC DESIGNATION APPLICATION

2516 MULBERRY TERRACE



DATE: DECEMBER 13, 2022

PRESENTERS: LORRIE MULDOWNNEY AND DAVE BABER

New Mulberry Street Home



FOR SALE

Jimmy Gardner
Exclusive Agent

123 Fifth St.

Sarasota

Phone 3429

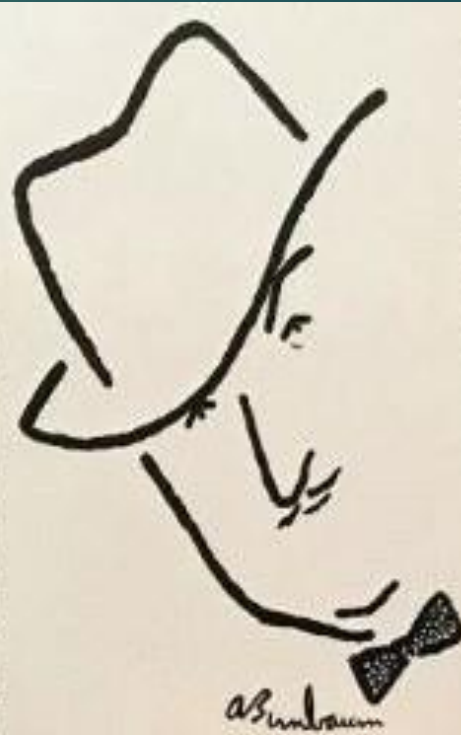
* Designed for graceful Florida living is this Mulberry Street home which is now being completed for Mr. and Mrs. Nate Eagle. The comfortable living room, which is approximately 13x25 feet, is supplemented with a 15x18-foot patio and a guest room, bar and social room above the garage. The tile room has an overhang of three feet, providing shade from the summer sun. The house is cream-colored with outside trimmings of a light shade of green. The only wood in the house is in the door frames, the cabinets and the built-in bookcase. Window framing is of tile, and floors are of rubber tile and terrazo.

-
- This is a detailed historical map of the Florida peninsula and its surrounding regions, including parts of Alabama and Georgia. The map is oriented with North at the top. Key features include:
- Water Bodies:** Tampa Bay, the Gulf of Mexico, and the Atlantic Ocean are clearly labeled. The Suwannee River is shown flowing into the Gulf.
 - Rivers:** The Hillsboro R., Alafia R., Little Manatee R., and Suwannee River are depicted.
 - Coastal Features:** Long Beach I., Long Beach, and various bays and inlets are shown.
 - Landmarks and Towns:** St. Petersburg, Clearwater, and the Charlotte Harbor area (including Boca Grande and Charlotte Harbor) are marked. Other locations like Tallahassee and Mobile are also indicated.
 - Geographical Labels:** "Flat & Sandy Land" is noted in the northern part of the peninsula. "Old Spanish Fields" are labeled near the Suwannee River.
 - Map Elements:** A compass rose is located in the upper right, and a scale bar is at the bottom.



THE GREATEST CARNIVAL "TALKER," NATE EAGLE, OF THE WORLD OF MIRTH SHOWS, EXHORTS A CROWD

...E, who manages the
 ...w for the Ringling
 ...s and Barnum & Bailey
 ...ll be the last of the great
 ...rs." In times past, these
 ...juncts to the world of
 ...d calliope were known as
 ...ers, but both the art and
 ...gy have been refined.
 ...almost with contempt of
 ... (1900), whose address
 ...y, staccato, canine qual-
 ...subordinate chore of pre-
 ...de and bawling, "Hold
 ...verybody! Here come the
 ...To Eagle, theirs was a
 ...—the mere business of
 ...a stick, at show time, and
 ...itive description of their
 ...eels that spiders, a few
 ...advanced from this posi-
 ...very far. They had a pat-
 ...ed, like a politician with
 ...n speeches, and insufficient
 ...rom it, even in the face of



Nate Eagle

weakness. In Sarasota, Florida
 he and most of his midgets,
 greatly admired for the sage-
 less way he has served as a
 guide to the band of bright
 diminutive entertainers whom
 to perform across the nation,
 them about investments, and
 them on domestic problems,
 general acting as a father and
 Eagle's fleeting expression
 when he is guilty of what he
 a lapse from unctious is a
 hint of abashment ever seen.
 He is of middle height, w-
 tached, broad-shouldered, w-
 eard countenance, snow-
 parted in the middle, and a
 of beaming and mischievous
 as if his urea cry had just
 in steering a group of pe-
 tent to see a giant five feet
 tall. Altogether, he looks
 a youthful, beardless Santa
 has just dropped off a box.

OWNERSHIP HISTORY

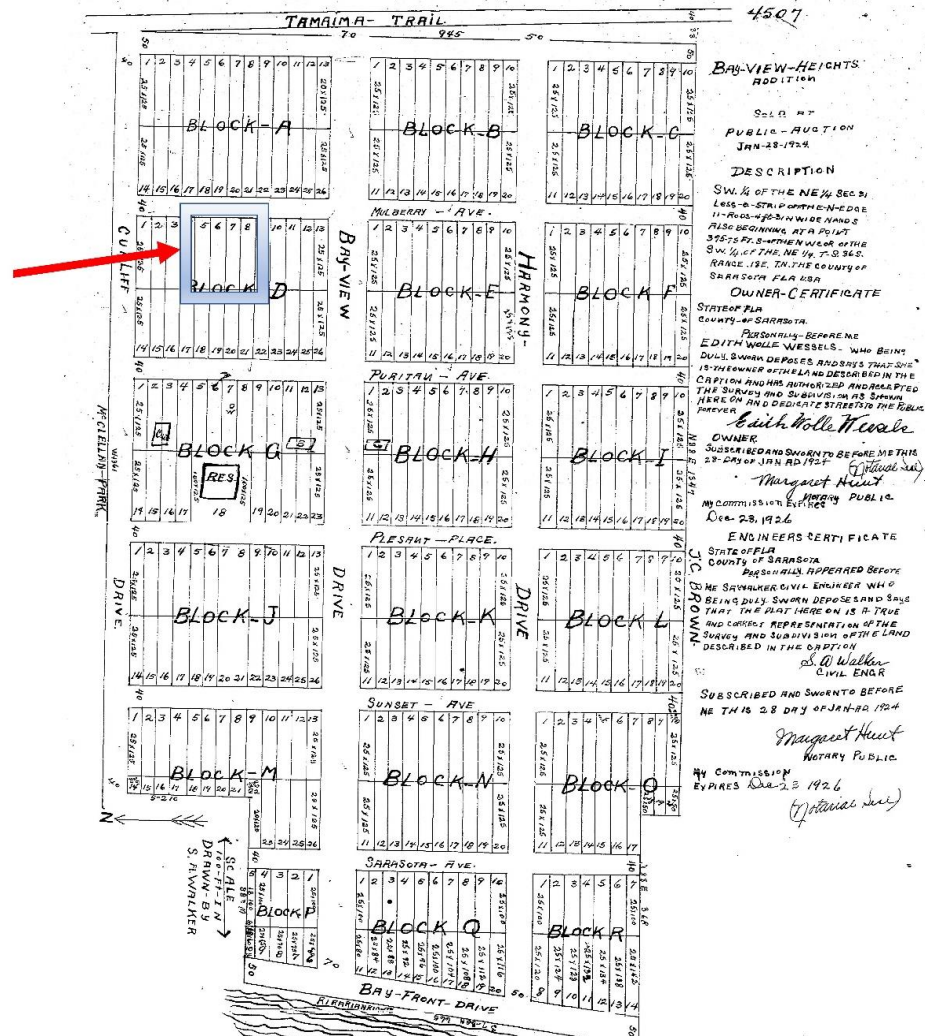
Samuel and Cecelia Alpert

Thomas and Delores Stokes

THE NATE AND MURIEL EAGLE HOUSE



2516 Mulberry
Terrace









Criteria for eligibility

STATEMENT OF SIGNIFICANCE

THE STRUCTURE LOCATED AT 2516 MULBERRY TERRACE POSSESSES INTEGRITY OF LOCATION, DESIGN, SETTING, MATERIALS, WORKMANSHIP AND ASSOCIATION AND IS ELIGIBLE FOR HISTORIC DESIGNATION BY THE CITY OF SARASOTA IN ACCORDANCE WITH SECTION IV OF THE SARASOTA CITY CODE UNDER CRITERIA 802 (1) C AND D.

C. FOR ITS ASSOCIATION WITH NATE T. EAGLE WHO WAS RECOGNIZED NATIONALLY FOR HIS PROMINENCE AS A CIRCUS BARKER AND RINGMASTER FOR THE RINGLING BROTHERS CIRCUS AND FOR HIS PROMINENT ROLE IN THE CHICAGO AND NEW YORK WORLD'S FAIRS AND

D. ITS DISPLAY OF THE DISTINCTIVE VISIBLE CHARACTERISTICS OF THE ART MODERNE STYLE OF ARCHITECTURE.

Questions

