



# SARASOTA JUNGLE GARDEN

## HISTORIC DISTRICT DESIGNATION APPLICATION

### 3701 BAY SHORE ROAD

DATE: DECEMBER 13, 2022

PRESENTERS: LORRIE MULDOWNY AND DAVE BABER

# INDIAN BEACH NEIGHBORHOOD



INDIAN BEACH WAS PLATTED IN 1891 BY  
CONNECTICUT RESIDENTS INTERESTED IN CREATING A  
WINTER COLONY IN SARASOTA.

# SARASOTA JUNGLE GARDENS

WAS FIRST OWNED BY DAVID B. LINDSAY AND DEVELOPED FOR HIS RESIDENCE

OVER TIME, LINDSAY COLLABORATED WITH HIS NEIGHBOR AND FRIEND PEARSON CONRAD WHO OWNED THE ADJOINING SARASOTA JUNGLE NURSERIES TO CREATE A GARDEN AND THEN OPEN IT TO THE PUBLIC.

PEARSON CONRAD, A LANDSCAPE DESIGNER CHARTED THE STREAMS, PLANNED THE LAKES AND PROVIDED MANY OF THE GARDENS' PLANTINGS.

H.R. TAYLOR WAS ANOTHER OWNER OF THE GARDENS IN THE EARLY YEARS OF ITS EXISTENCE.



# HISTORY OF JUNGLE GARDENS



ON NEW YEAR'S EVE 1939, SARASOTA JUNGLE NURSERIES  
OFFICIALLY OPENED TO THE PUBLIC

THE BUSINESS WAS INCORPORATED ON JANUARY 5, 1940.

IN 1950, ADMISSION WAS 30 CENTS FOR CHILDREN AND 99 CENTS  
FOR ADULTS

# HISTORY OF JUNGLE GARDENS

THROUGH THE 1960s, THE GARDENS HOSTED  
SEVERAL MISS FLORIDA PAGEANTS

IT HAS ALSO BEEN THE INSPIRATION FOR NUMEROUS  
CHILDRENS BOOKS.

AN IMAGE OF THE GARDENS MEASURING 18 X 60  
FEET WAS DISPLAYED AT NEW YORK'S GRAND  
CENTRAL STATION FOR 21 DAYS DURING THE 1970's  
WITH THE EXPECTATION THAT 5 MILLION PEOPLE  
WOULD SEE IT.

## SARASOTA JUNGLE GARDENS – SUBSEQUENT OWNERS

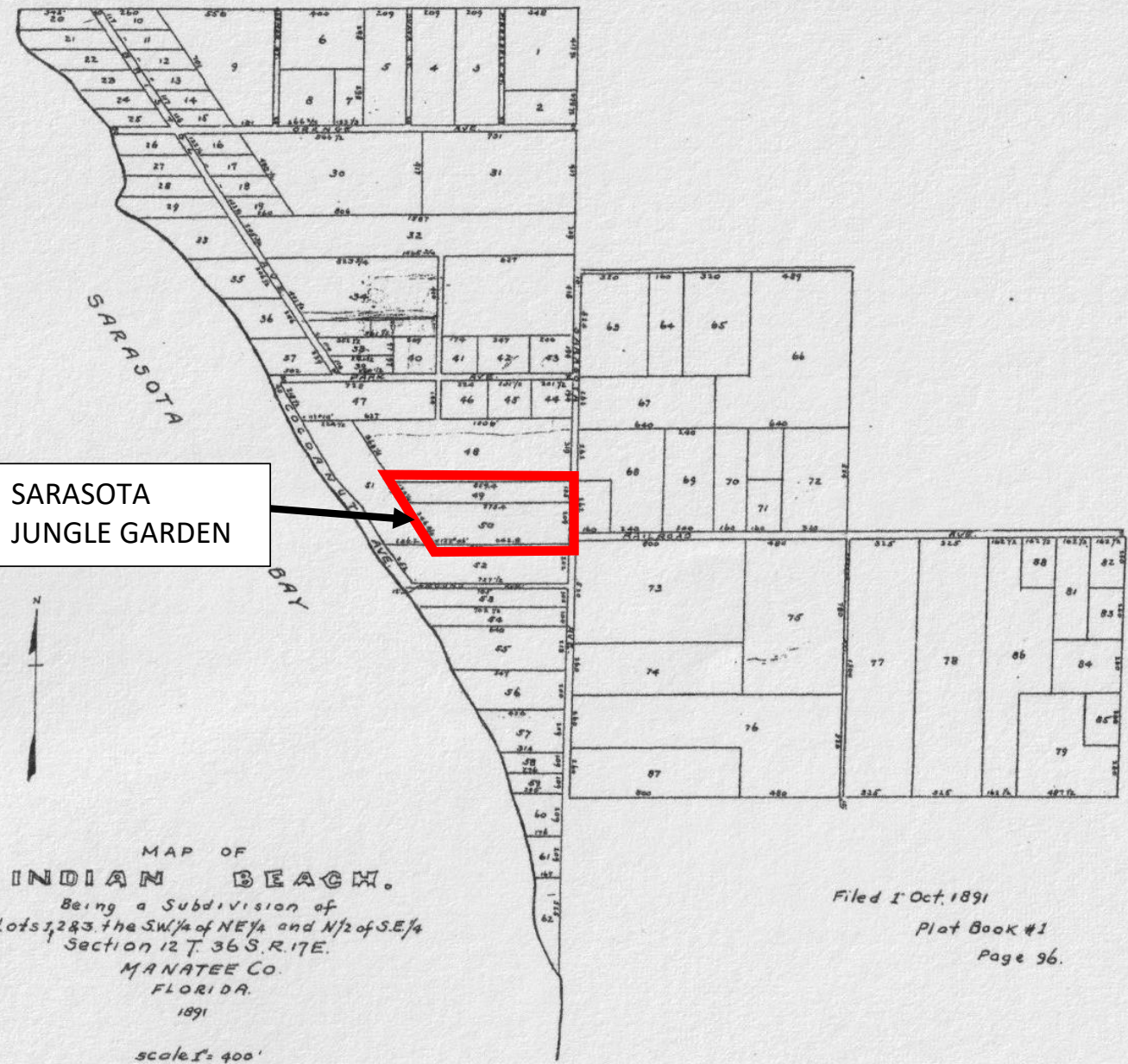
IN 1958 THE PROPERTY WAS SOLD TO ELDON LINDSEY AND THEN IN 1965 TO DR. GEORGE BAUGHMAN, THE FIRST PRESIDENT OF NEW COLLEGE.

IN 1971, SARASOTA JUNGLE GARDENS WAS PURCHASED BY DR. ARTHUR C. ALLYN. HIS DAUGHTER, DOROTHY TINNEY, AND HER FAMILY OWN THE GARDENS TODAY.

CHRIS LAVICK, DOROTHY'S SON IS THE MANAGER OF THE SITE. WITH THE GUIDANCE OF A BOARD OF DIRECTOR'S CHRIS HAS CREATED A NON-PROFIT ORGANIZATION TO FURTHER THE EDUCATIONAL MISSION OF THE GARDENS.

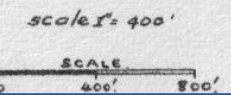


A-33



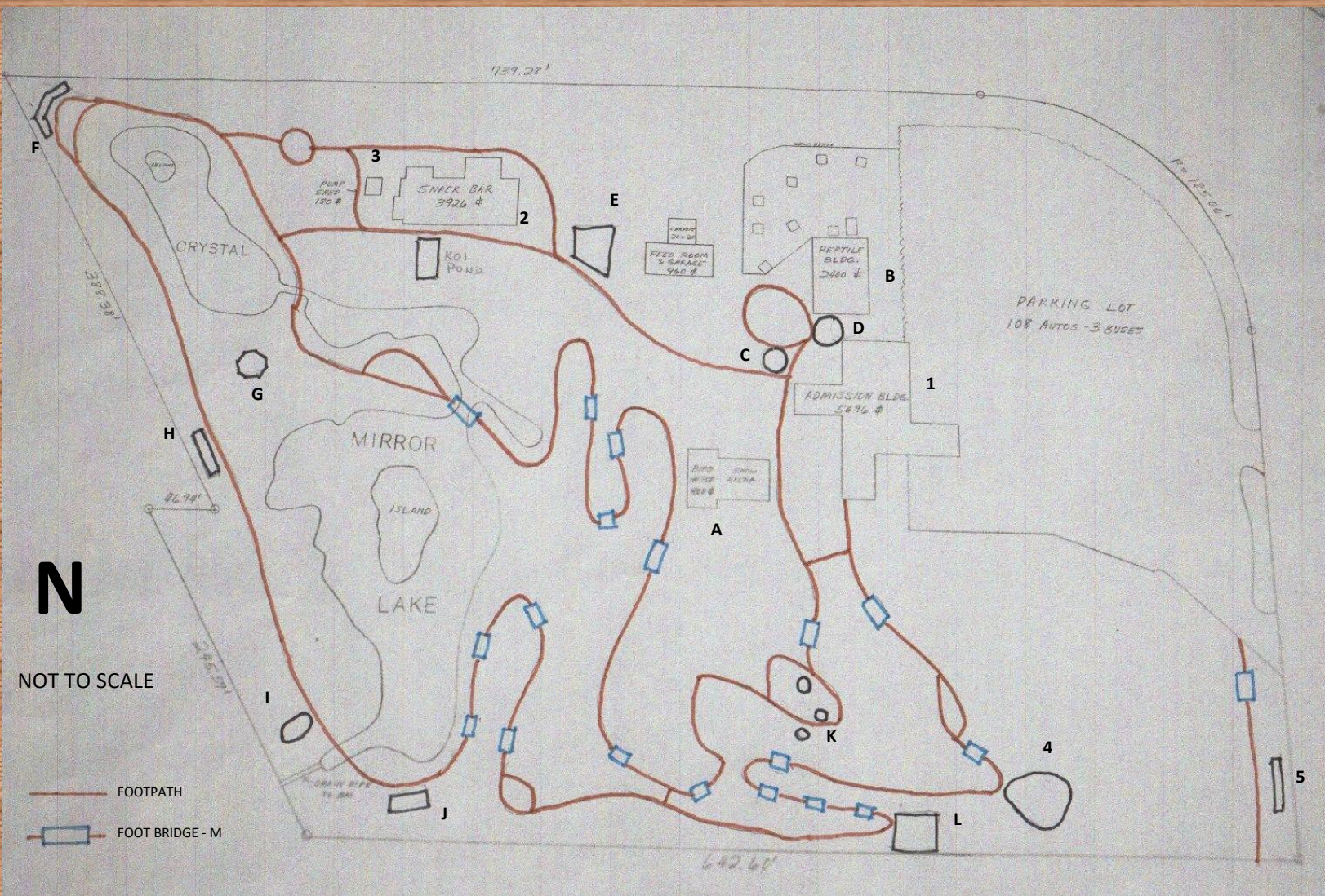
SARASOTA  
JUNGLE GARDEN

MAP OF  
INDIAN BEACH.  
Being a Subdivision of  
Lots 1, 2 & 3, the SW 1/4 of NE 1/4 and N 1/2 of SE 1/4  
Section 12 T. 36 S. R. 17 E.  
MANATEE CO.  
FLORIDA.  
1891



Filed 1<sup>st</sup> Oct. 1891  
Plat Book #1  
Page 96.





## CONTRIBUTING RESOURCES

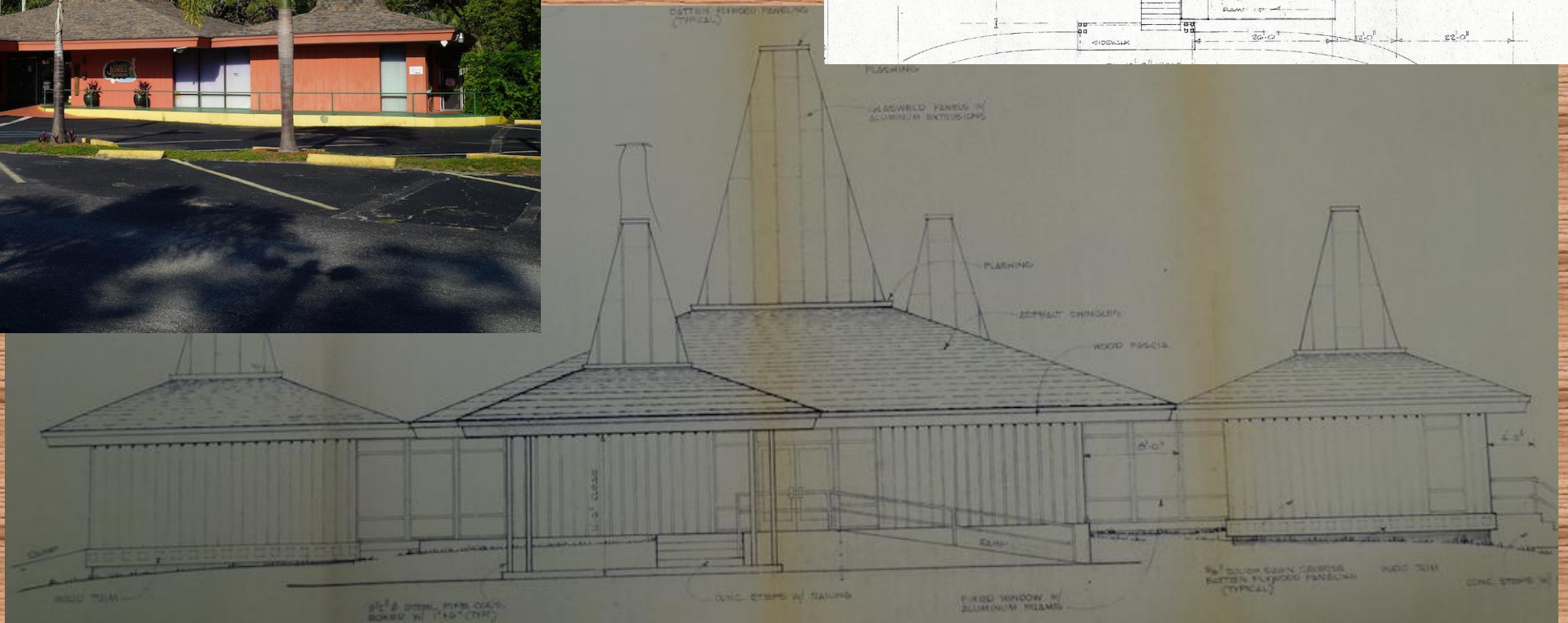
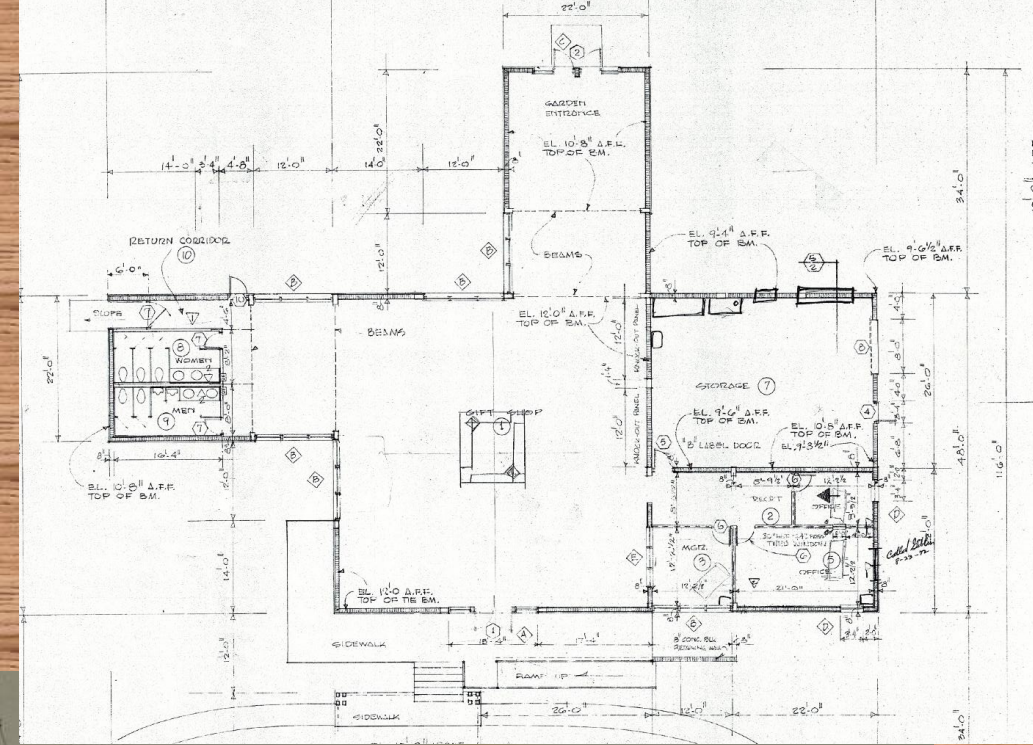
1. Sales & Admissions Building
2. Lindsay House/Flamingo Café
3. Pump House
4. Alligator Pond/Turtle Pond
5. Property Sign

## NON-CONTRIBUTING RESOURCES

- A. Show Pavilion
- B. Reptile World
- C. Crocodile Pond
- D. Alligator Pond
- E. Jungle Playground
- F. Gardens of Christ
- G. Gazebo
- H. Porcupine House
- I. Jungle Jill Alligator Sculpture
- J. Giant Snakes of the World
- K. Foundations from former aviaries
- L. Petting Zoo
- M. 19 bridges

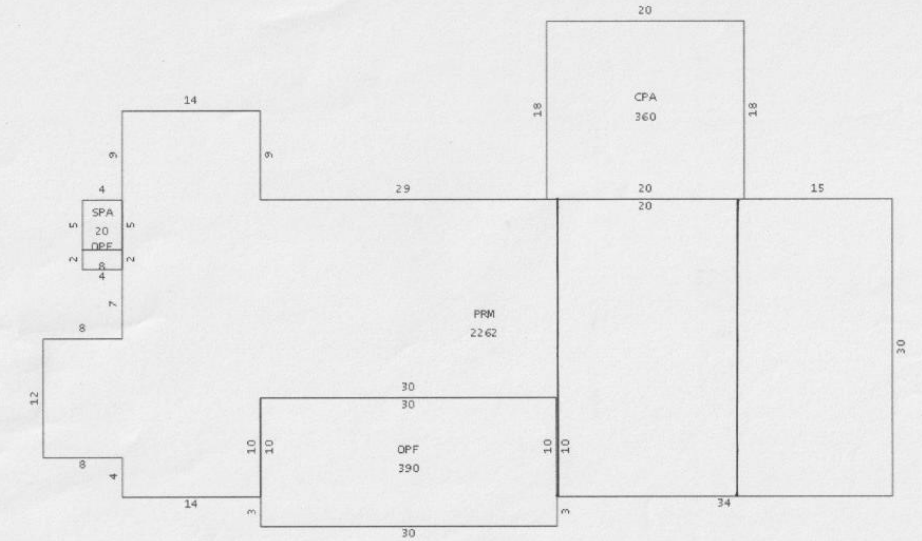


# 1. SALES & ADMISSION BUILDING



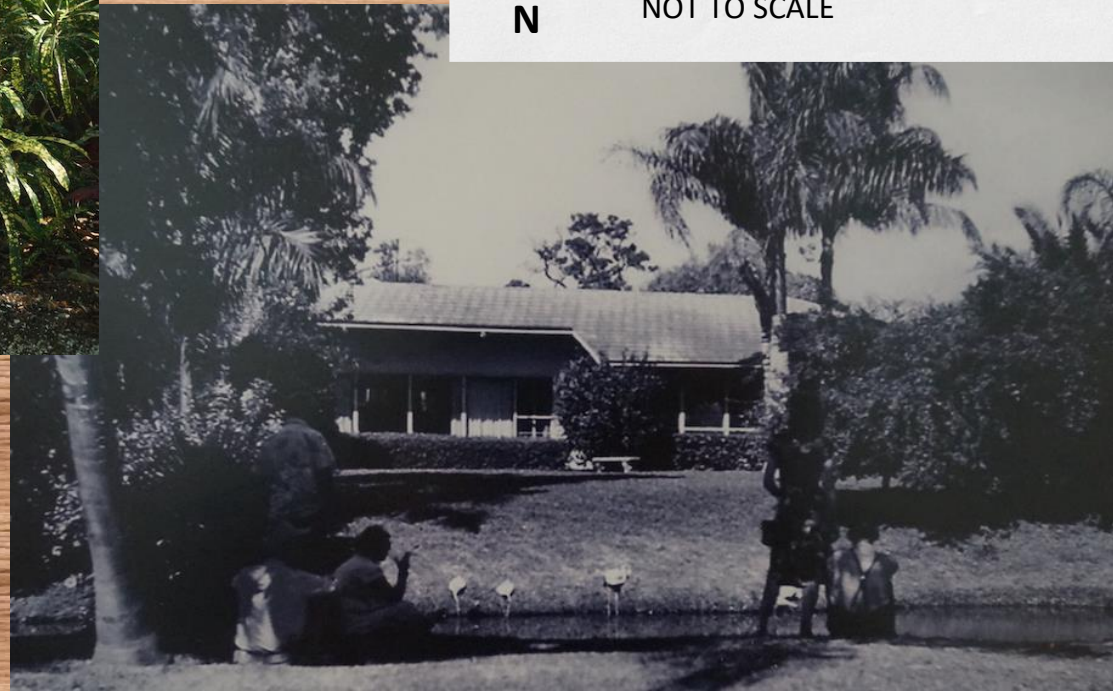


## 2. LINDSAY HOUSE/ FLAMINGO CAFE



N

NOT TO SCALE





### 3. PUMP HOUSE





## 4. ALLIGATOR/TURTLE POND



S.83—Alligators in Tropical Florida  
Sarasota Jungle Gardens 3C-H959

Native Florida Alligators





## 5. PROPERTY SIGN ALONG BAY SHORE ROAD





# CRITERIA FOR ELIGIBILITY

SARASOTA JUNGLE GARDENS IS ELIGIBLE FOR HISTORIC DESIGNATION IN ACCORDANCE WITH THE CITY OF SARASOTA ZONING CODE AS A HISTORIC DISTRICT THAT REPRESENTS A GEOGRAPHICALLY DEFINED AREA WHICH CONTAINS STRUCTURE, SITES, OBJECT, AND SPACES LINKED HISTORICALLY THROUGH LOCATION, DESIGN SETTING MATERIALS WORKMANSHIP FEELING AND ASSOCIATION.



# QUESTIONS

